

# V430-F

## Hassle free code reading

### Unprecedented out of the box read performance

Will read even the toughest code with minimal setup

### WebLink: 100% web browser based configuration

No software to install or maintain. Configure the reader from any web enabled platform

### Liquid lens autofocus

Auto adjust mode for quick and simple setup

### WebLink: Intuitive user interface with built in guided tour

No training required; you already know how to use it

### Entry level, fixed focus models available

### Direct part mark reading

### Compact design

Will fit into any application, regardless of available space

### Easy integration

Ethernet / IP, ProfiNET I/O, TCP/IP and serial port to connect to any environment

### Wide input voltage range

5-30VDC and passive power over Ethernet



Field replaceable front window

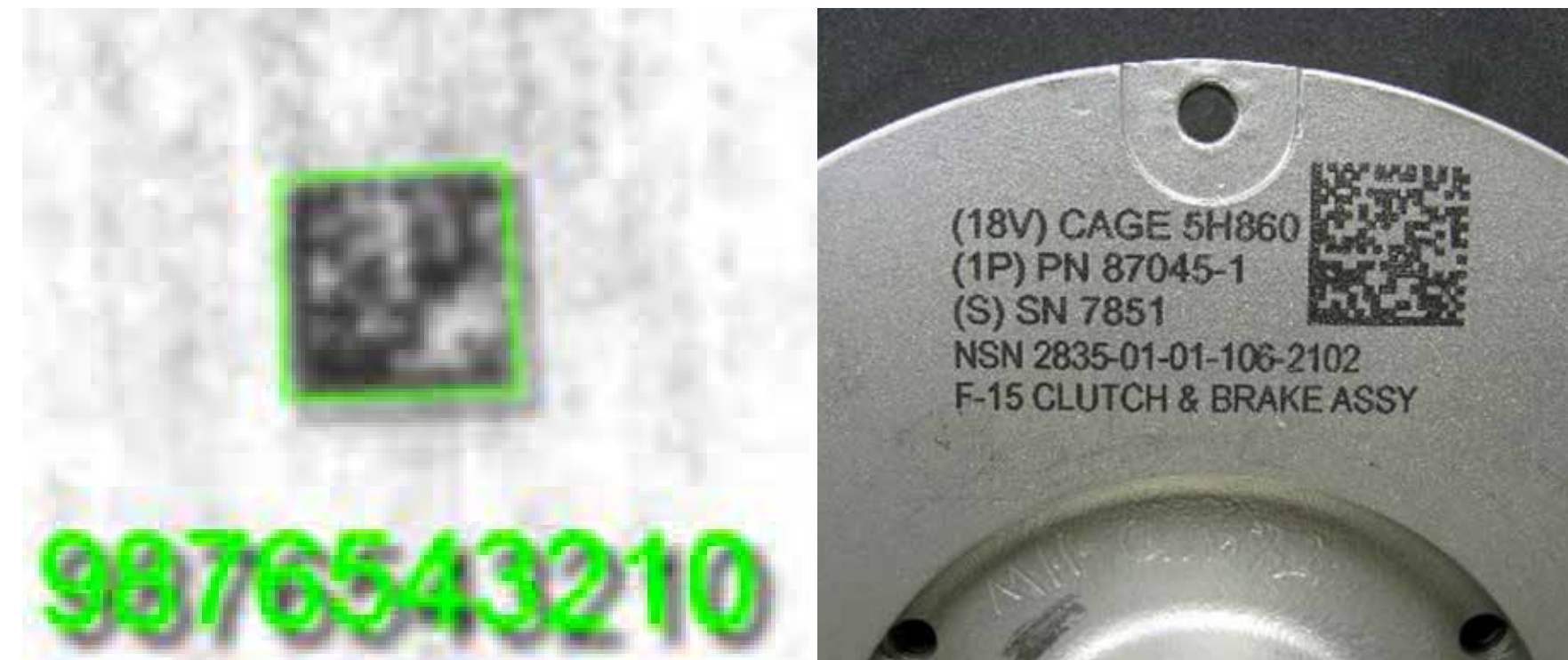


### Easy setup



WebLink browser base configuration provides a lively and intuitive interface, without installing software

### X-Mode decoding algorithm



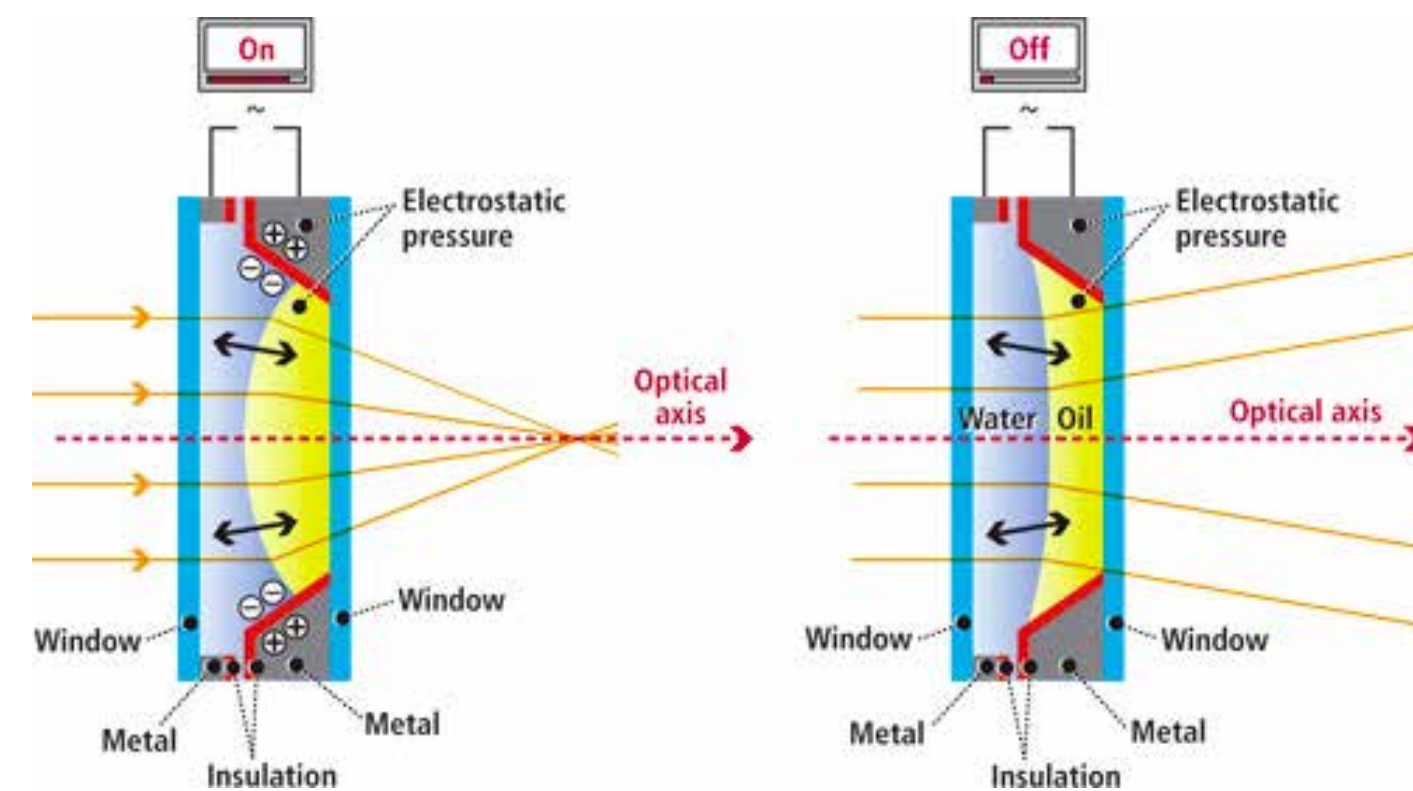
Will read tough direct part marks right out of the box

### Compact design



The V430-F can be mounted anywhere that reading is required and space saving accessories are available to save further space

### Liquid lens autofocus



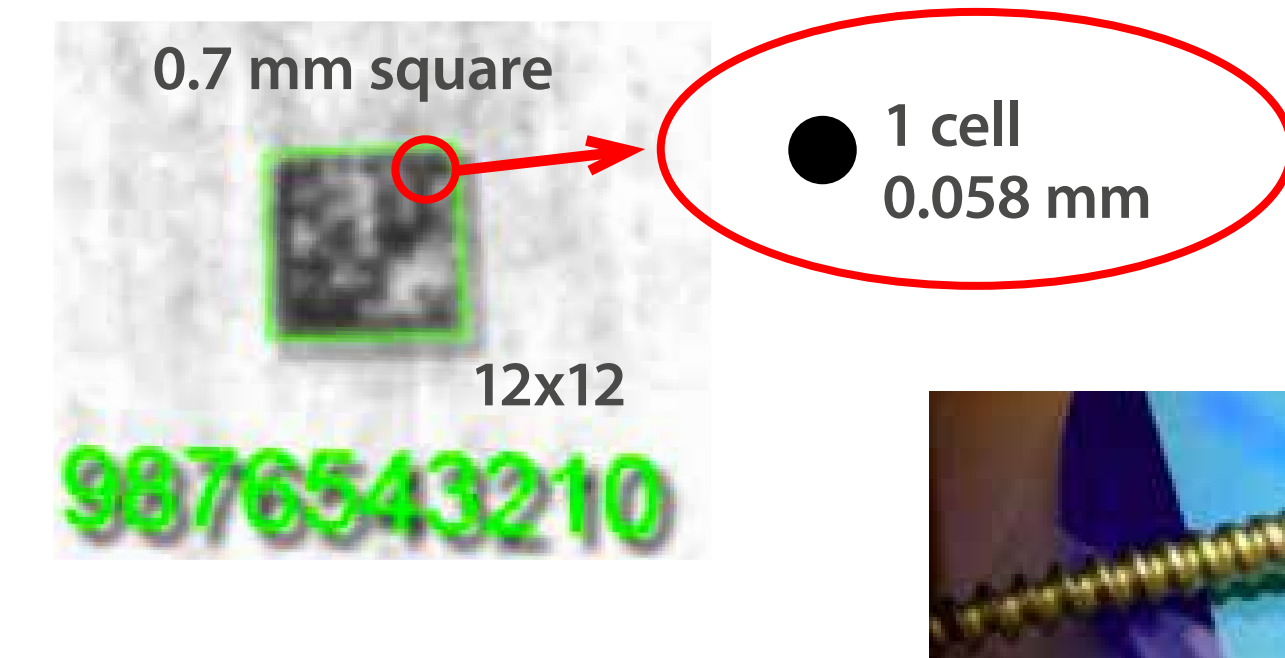
The reader automatically adjusts the focus and other image parameters for installation

### Built in connectivity



Easy integration with any automation system with Ethernet/IP, ProfiNET I/O, TCP/IP and serial interfaces plus 3 digital outputs

### High density reading



Narrow field variant reads direct part marks with cell sizes as small as 0.05mm, allowing marks on even the smallest of parts

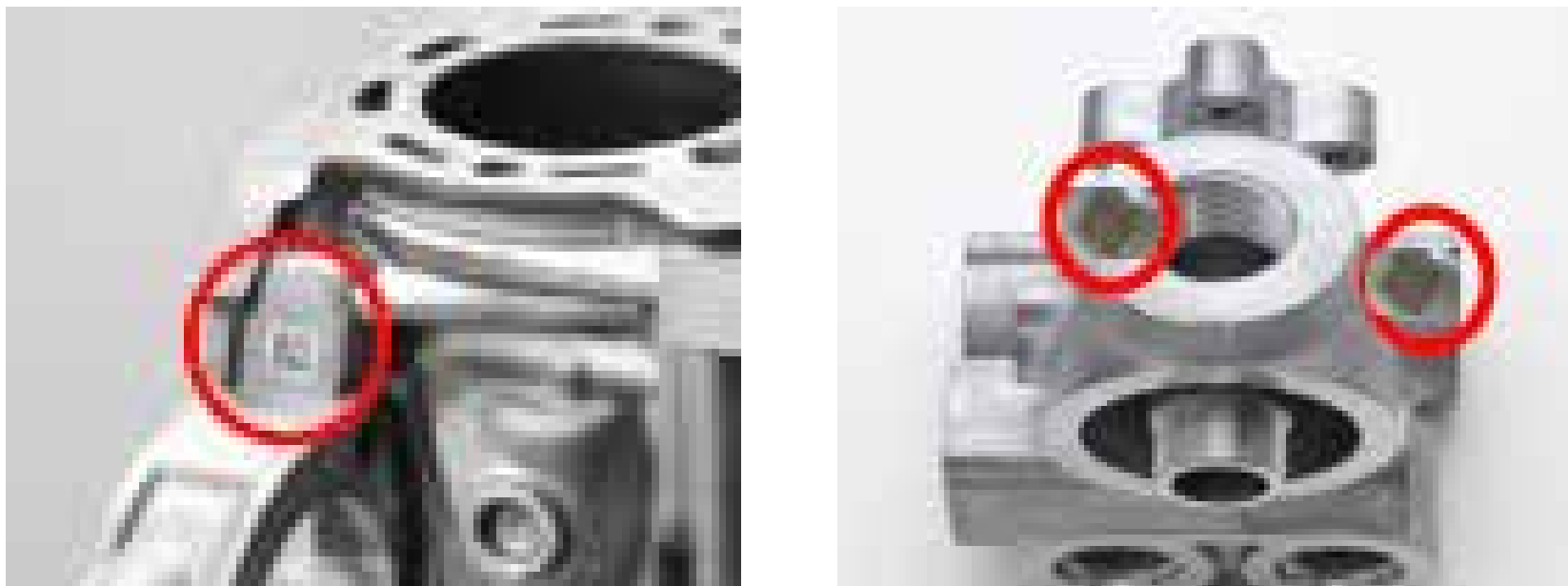



# V430-F applications

The V430-F is ready for your traceability application

**Automotive**

Full traceability of components and assemblies  
Direct marking on various materials



Code reading of difficult materials  
such as resin and metal

**Electronics and semiconductor**

Full traceability of components and assemblies  
Code marking on small parts

Smartphone housing      Camera module



Electronic substrate

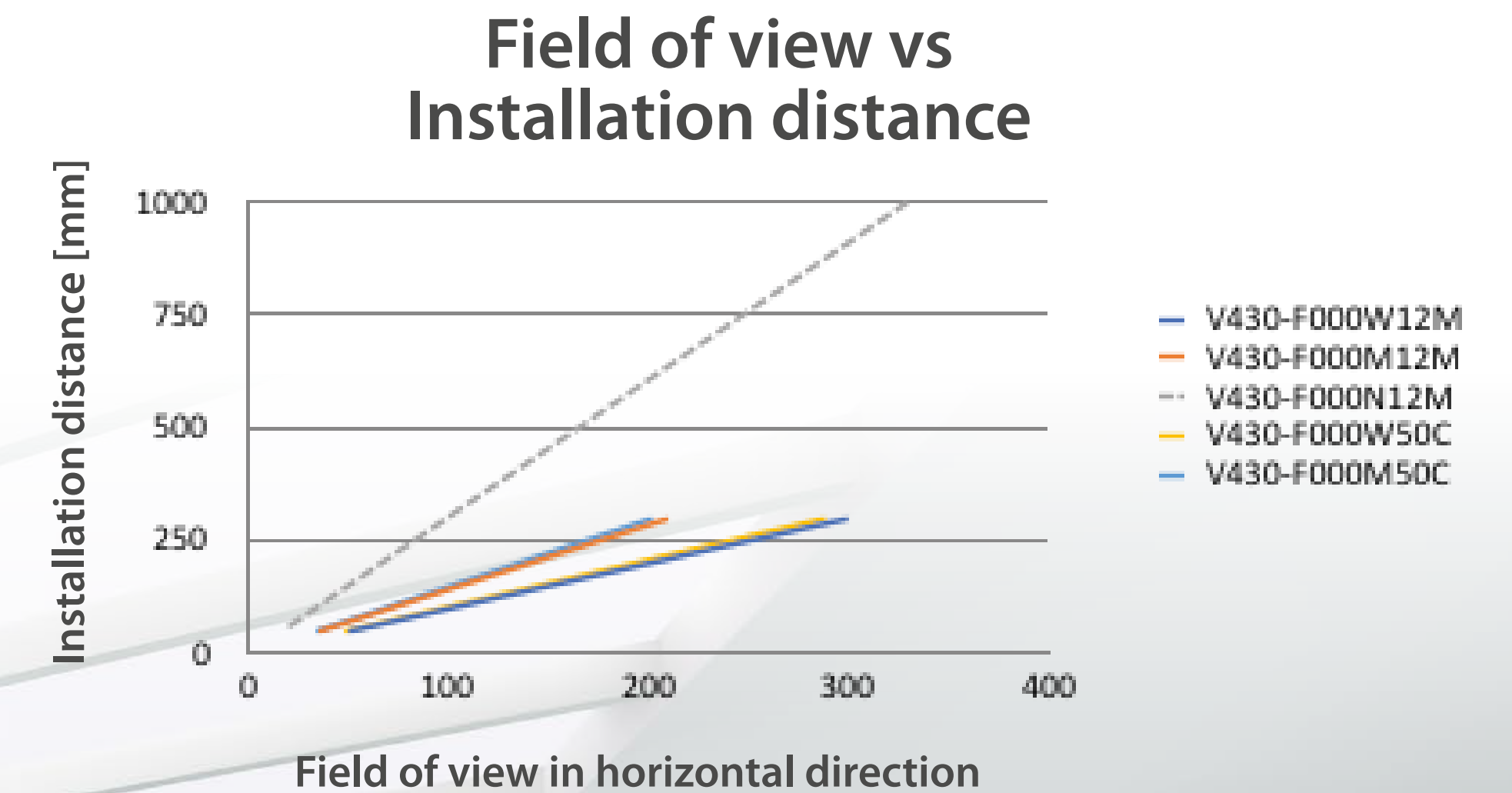
**Pharma, food & beverage**

Traceability moving from secondary to primary packaging for serialization and prevention of counterfeiting



## V430-F

- Unprecedented out of box reading
- Compact design
- Intuitive setup and installation



Model	Description	Focus distance	Minimum 2D cell size	Moving codes
V430-F000W12M	1.2 Megapixel Sensor, Autofocus, Wide view	50mm-300mm	0.13mm	Yes
V430-F000M12M	1.2 Megapixel Sensor, Autofocus, Standard view	50mm-300mm	0.08mm	Yes
V430-F000N12M	1.2 Megapixel Sensor, Autofocus, Narrow view	40mm-150mm	0.05mm	Yes
V430-F000W50C	5 Megapixel Color Sensor, Autofocus, Wide view	50mm-300mm	0.0mm	No
V430-F000M50C	5 Megapixel Color Sensor, Autofocus, Standard view	50mm-300mm	0.08mm	No
V430-F050M03M	0.3 Megapixel Sensor, 50mm fixed focus, Standard view	50mm	0.13mm	Yes
V430-F081M03M	0.3 Megapixel Sensor, 81mm fixed focus, Standard view	81mm	0.19mm	Yes
V430-F102M03M	0.3 Megapixel Sensor, 102mm fixed focus, Standard view	102mm	0.25mm	Yes



# V430-F

## Additional features:

- Liquid lens auto focus for easy setup
- X-Mode decoding algorithm to read even the toughest codes
- Web based configuration with any HTML-5 browser
- 0.4MP, 1.2MP monochrome or 5MP color sensor
- Right angle mirror accessory for space constrained applications
- Narrow, standard and wide view lenses
- Fixed focus variant for entry level applications
- Read codes from 0.05mm resolution (UHD lens)
- Ethernet TCP/IP, Ethernet/IP, ProfiNET I/O and serial interfaces
- 2 digital inputs, 3 digital outputs
- 5 VDC-30 VDC operating voltage
- Passive power over Ethernet for single cable connections
- CE, UL, cUL, ROHS

